

# Somers Heath Primary School

## Curriculum overview - Spring 2 2026

### This half term in Year 6, we will be learning:



#### Maths

- To interpret a range of graphs and charts
- To increase fluency in written methods for multiplication and division
- To calculate the mean
- To solve problems involving converting units of time
- To use simple formulae and form simple linear equations
- To find pairs of numbers that satisfy an equation

#### Science

- To describe how the earth and living things have changed over time
- To explain how fossils can be used to find out about the past
- To explain how offspring can vary
- To link adaption and evolution

#### Geography

- To use maps, aerial photographs, plans and e – resources to describe what a locality might be like.
- To explain what different regions are like around the world.
- To explain how extreme weather impacts on people and localities.

#### RE

- To develop knowledge of Ahimsa (harmlessness), Grace (generosity of God) and Ummah (community)
- To develop ability to interpret religious ideas relating to commitment

#### PSHE

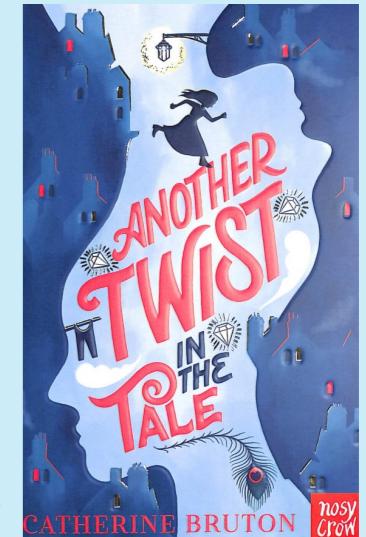
- To know what it means to be a critical consumer
- To know about common risks associated with money and know where to get help about financial risks

#### Computing

- To create a quiz using an online format

#### English

- To use writing style appropriate to genre, using a range of sentences for specific effects
- To effectively combine description, action and characterisation
- To include significant interaction between characters using action or dialogue
- To use a range of methods to link ideas within paragraphs or sections i.e. secure use of pronouns, connectives, etc.
- To sometimes use colloquial narration directly to the reader.
- To understand features of different text types: suspense narratives, emotive diary entries and formal letters of complaint.



Our class guided reading book is: **Another Twist in the Tale**

**By Catherine Bruton**

#### Music

- To sing confidently in a wide variety of styles with expression
- To communicate the meaning/mood of a song

#### PE

- To explain why coordination is needed in rounders and cricket
- To explain why you need to consider fielder positions as a batter

#### Art / DT

- To create a design for a waistcoat
- To use simple sewing techniques

# Somers Heath Primary School

## Curriculum overview - Autumn 1 2025



### Key Dates

Monday 23rd February—children return to school

Monday 2nd March—secondary school offer day

Monday 2nd March—Year 6 pupil learning review day

W.C. Tuesday 3rd March—Book Fair

Friday 6th March—World Book Day

Tuesday 31st March—last day of spring term

Children return to school for summer term on Tuesday 14th April.

### Reading and Homework

- Homework is set weekly on Fridays and due in the following Wednesday.
- Homework is set on SATs Companion consisting of one English task and one maths task.
- Spellings are given out each Friday and tested the following Friday. It is expected that children practise their spellings at home.
- A list of year 5 / 6 spelling words can be found in journals—please also make time for practising these.
- In year six, children take responsibility for changing their own reading books.
- It is expected that reading is done at home at least three times per week and a comment written in journals.
- Journals will be checked every Monday.

### P.E Days and Uniform Expectations

Our PE days are: Monday, Tuesday, Wednesday and Thursday.

Please make sure that the children come to school with all the relevant P.E. equipment: shorts, t-shirt and plimsolls for indoor activities and a tracksuit and trainers for outdoor games sessions.

No jewellery is to be worn at any time during P.E. sessions for safety reasons and long hair should be tied back. If your child wears earrings we suggest that these are taken out before school on the day your child has P.E.

Please ensure all of their equipment is clearly labelled with their name.

### Year 6 Team

**Mr R Reddy—Assistant Head of School / Class Teacher**

**Ms A Venemore—Year Group Lead Teacher**

**Ms S Crowhurst—Learning Support Assistant**

**Ms I Davison—Learning Support Assistant**